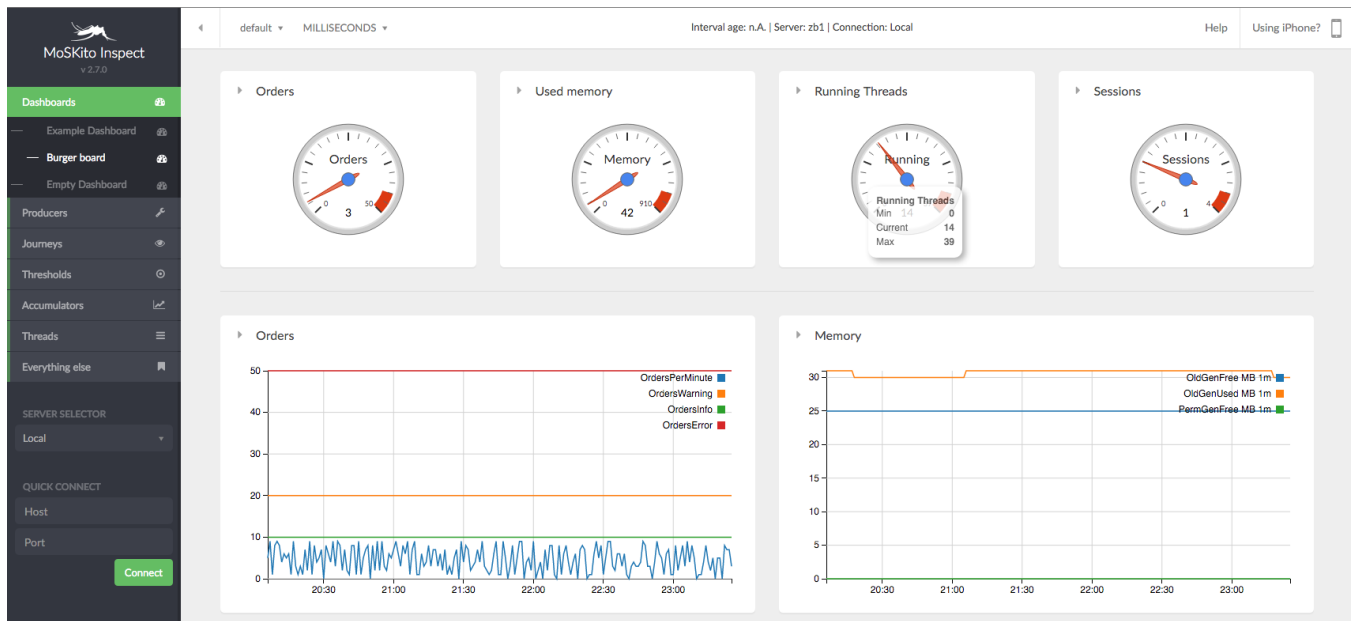


MoSKito-Inspect User Guide



This document shows how to work with Inspect, MoSKito's web interface.



Warning: This guide works with the User Interface prior to 2.6.

In this guide

1. [What is MoSKito-Inspect](#)
2. [Anatomy and Common Tasks](#)
3. [Accessing Your Application](#)
4. [Producers](#)
5. [Journeys](#)
6. [Thresholds](#)
7. [Accumulators](#)

Important tasks

- [Access your application with WebUI](#)
- [View all producers](#)
- [Create a threshold](#)
- [Create an accumulator](#)
- [View accumulator data in a chart](#)